

The Quantum Hologram And the Nature of Consciousness ¹

**Edgar D. Mitchell, Sc.D.
and
Robert Staretz, M.S.**

Abstract

We present a new model of information processing in nature called the Quantum Hologram which we believe is supported by strong evidence. This evidence suggests that QH is also a model that describes the basis for consciousness. It explains how living organisms know and use whatever information they know and utilize. It elevates the role of information in nature to the same fundamental status as that of matter and energy. We speculate that QH seems to be nature's built-in vast information storage and retrieval mechanism and one that has been used since the beginning of time. This would promote QH as a theory which is basis for explaining how the whole of creation learns, self-corrects and evolves as a self-organizing, interconnected holistic system.

1. Definition of Consciousness

One common dictionary definition of consciousness is "the ability to be aware of and to be able to perceive the relationship between oneself and one's environment". The most basic definition, however, is simply "awareness". Another definition suitable for more complex organizations of matter such as animals with a brain includes a description which contains some of the following ideas: "thoughts, sensations, perceptions, moods, emotions, dreams, and awareness of self". Just like life itself, consciousness is one of those things that is easy to recognize but very difficult to define. It has been debated by philosophers in the West since the time of ancient Greek civilization over twenty five hundred years ago.

¹ Copyright by CCRI and the Journal of Cosmology. Printed under the authorization of the author, Dr. Edgar Mitchell, and under the authorization of Dr. Rudy Schild, Editor-in-Chief, Journal of Cosmology, Center for Astrophysics, Harvard-Smithsonian, Cambridge, MA (Originally printed in the Journal of Cosmology, 2011, Vol. 14.)

Eastern traditions have been wrestling with the concept of consciousness for millennia and seem to have a much better handle on it although still not nearly complete. In the West, explanations of consciousness have been mostly ignored or left to our religious traditions. This is certainly true since the time of Descartes and the philosophy of Cartesian duality. It has only been in very recent times that a serious effort to understand mind or consciousness has been undertaken by the scientific community. Much of the effort now underway is based on the assumption of epiphenomenalism, that consciousness, or mind if you prefer, is a byproduct of the functioning of underlying physical structures of the brain and that mind is confined entirely within the brain's processes. However, there is a considerable amount of accumulating experimental and anecdotal evidence suggesting that this interpretation is not correct (Chalmers 1996; Penrose 1994).

At a basic level consciousness seems to be associated with a sense of separation and awareness of the surrounding environment from the conscious entity. It also seems to be associated with the ability to process, store and/or act on information gathered from that external environment. But is consciousness restricted to a functioning brain? Are microscopic organisms such as viruses, amoeba, and algae conscious in some primitive sense? Clearly, they do not have brains let alone a nervous system or even neurons. And yet they demonstrate purposeful behavior and are aware of their environment. Amoeba, for example, search for food by moving on pseudo pods toward prey that they eventually surround, engulf and digest. Several types of algae are so versatile that they change the process how they obtain food based on available sunlight. When light is plentiful, *they* gravitate towards it, which they sense through a photoreceptor at one end of the cell. If the light is too bright, they will swim away toward more suitable lighting conditions.

At a more primitive level viruses are considered by many scientists as non-living because they do not meet all the criteria commonly used in the definition of life. They do, however, exhibit some aspects of consciousness or at least some rudimentary form of an awareness of their surroundings. Unlike most organisms, viruses are not made of complete cells. They reproduce by invading and taking over the machinery of their target host cell. When a virus comes into contact with a potential host, it inserts itself into the genetic material of the host's cell. The infected cell is then instructed to produce more viral protein and genetic material instead of performing its normal functions. Is that purposeful behavior or intentionality by the invading virus?

It would seem that based on our first definition, even simple living entities are conscious to some degree, since they display a level of awareness and intentionality to, in some way, manipulate their environment. And, it's not just restricted to living entities. We find certain properties all the way down to the subatomic level, particles in some sense aware of their environment. How is this possible? At the molecular, atomic and subatomic levels it is through the quantum phenomenon of entanglement and non-locality that particles act and react to other particles with which they have become entangled.

2. The Roots of Consciousness

Could it be that at the most fundamental level consciousness begins with these ubiquitous quantum events? We believe that is, in fact, the case. Furthermore, recent evidence suggests that certain quantum phenomena (Schempp 1998, 2007, 2008; Mitchell 1995, 2003, 2008) operate at the macro level as well as the micro level and are responsible for many phenomena that living entities experience that cannot be otherwise explained. This would explain how twins or mother and child seem to communicate telepathically when at least one of them is under extreme duress as we have seen is so often reported anecdotally in the literature. In fact, as we shall soon see, several of these so-called quantum group effects including a whole class of so-called psychic phenomena have been documented throughout recorded history. As we shall show shortly, some of these phenomena have been either demonstrated or suggested in recent laboratory experiments.

Just like everything else in nature, moving up the evolutionary chain of increasing complexity in organisms is built upon the foundation of what has come before. For consciousness, we propose an evolutionary scaffolding as illustrated in Figure 1. At the lowest level resides the most basic aspects of undifferentiated awareness built upon the quantum principles of entanglement, non-locality, and coherent emission/absorption of photons. These phenomena are ubiquitous throughout the world of matter. At this most elementary level, all matter seems to be interconnected with all other matter and this interconnection even transcends space and time. We postulate that this is the basis for the most fundamental aspect of consciousness which we describe as undifferentiated awareness and this mechanism of basic perception extends up the entire evolutionary chain of increasing complexity of living organisms. The differences in consciousness being in degree and not in kind as one moves from left to right up the consciousness ladder.

Moving beyond the simplest level of the consciousness towards mentality (e.g. higher functions of consciousness/mind), the next level pertains to the consciousness of simple life composed primarily of single-celled organisms. Here we have the beginnings of a crude capability of awareness through the use of molecular structures that are sensitive to their environment utilizing either chemical and/or electro-magnetic means. In the latter case, this is especially prevalent at those frequencies in the EM spectrum corresponding to visible light, infrared and ultra-violet waves. Sensing the external environment by these means has been considered the primary mechanisms of perception that have been the focus of classical science for quite some time now. For simple organisms, like plants, amoeba, viruses, etc. clearly, there are no brain structures to facilitate perception. Marcer (1997) has applied a theory called the Quantum Hologram (see below) to propose that life at the most basic level, including such things as prokaryote cells and neurons in higher organisms, exchange information with their environment by utilizing the quantum property of non-locality. The implication here is that all organisms from the simplest to the most complex are interconnected at a very fundamental level using information obtained by nonlocal quantum coherence (Ho 1997). Furthermore, they are even interconnected with their external environment by their coherent quantum emissions via the mechanism of the Quantum Hologram as we shall soon demonstrate (Marcer et al. 1997).

Nature always seems to evolve into mechanisms and structures that enhance an organism's survivability in its environment. Other higher levels of perception and awareness are necessary to locate objects in space-time in addition to including the non-local quantum simple awareness effects as we have just described. So, as we move further up the evolutionary ladder, we continue to enhance mentality as shown in Figure 1. At each level, the organism has access to the perceptual mechanisms of the levels below. Clearly, at each level the organism is utilizing information (e.g. patterns of energy and matter) obtained from its environment. This implies that there is a process (e.g. consciousness) that uses and assigns meaning to this information. Note that "meaning" is also information that places the perceived information into context for use by the organism.

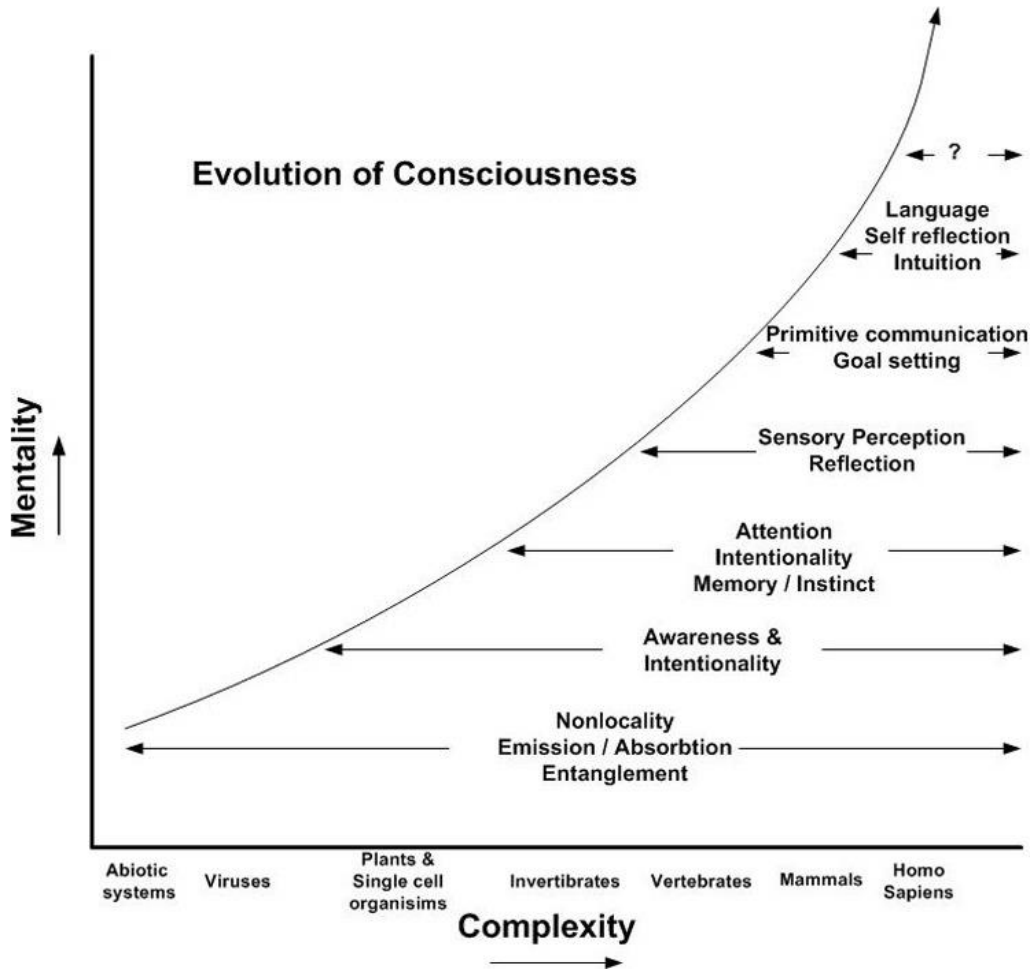


Figure 1 - Evolution of Consciousness

Penrose and Hameroff (1998) have proposed that microtubules in brain cells might be responsible for more fundamental forms of perception. They also postulate that these microtubules provide the foundation for the emergence of higher orders of consciousness in species with a brain. Microtubules are hollow cylindrical polymers of the protein tubulin which organize cellular activities. These protein lattices exist in the cell's cytoskeleton found within the brain's neurons. Penrose and Hameroff claim that tubulin states are governed by quantum mechanical effects within each tubulin interior and these effects function as a quantum computer using "quantum bits" that interact non-locally with other tubulins and with the Quantum Hologram. When enough tubulins are entangled long enough to reach a certain threshold a "conscious event" occurs. Each event results in a state which regulates classical neural activities such as triggering neural firings that ultimately affect perception, learning and/or memory.

At first glance, quantum states in biological systems seem difficult to maintain in brains because these quantum states generally require extreme cold (e.g. close to 0°K) to eliminate thermal noise produced by the environment. Some researchers argue that this is necessary to prevent decoherence of these quantum states. However, Penrose and Hameroff claim that decoherence may be prevented by the hollow microtubules themselves which act as shields to the surrounding "noisy" environment.

3. Holographic Processing

It has been suggested that the brain processes and stores information holographically as a massively parallel processing and associative computer system. Pribram (1999) and others have studied this extensively and demonstrated it in both the laboratory with animals and in operating theaters on humans. In the latter case, the brain has been exposed and stimulated with low voltage electrical signals while the patient was conscious to describe the resulting experience. These subjects have recalled extremely detailed and vivid memories as if they were actually reliving the experiences being recalled. Animals that have had portions of their brains damaged or removed have been able to recall memories (ex. Optimum ways to run a maze) even when the damage has been extensive. These experiments and several others provide evidence that suggests that brains store information holographically (e.g. stored as images contained within interference patterns). Marcer has further extended this to postulate that not only information is stored in this manner but that information is processed holographically in the brain as well. He has also attributed this processing to, in effect, creating a detailed three-dimensional movie generating the stream of consciousness that the mind experiences.

Holographic processing is accomplished with the brain acting as a phase conjugating device (e.g. a phase gate) which is a type of logic circuit where the inputs are sensitive to the phase of the input signal producing. The result is a "virtual" signal which is a mirror image of the quantum emissions (e.g. photons of light) actually emitted from the object being perceived. The brain acts as an information receptor utilizing adaptive resonance with a specific range of EM frequencies (e.g. wavelengths) in its input path. The input signals received are a representation of the external object resonating with similar virtual signals generated (output) by the brain. This sets up a resonance condition which may be interpreted as a standing wave between the object and the brain. The input signal is really the quantum emission spectrum of the object being perceived.

Like all holographic processing, the associative pattern that is created facilitates the retrieval of information in a resonant loop utilizing the overlapping reference signals of quantum emissions from the external object. It enables the perceiving organism's brain structures to perform pattern classification and recognition of the resonating signals. This resonance process is called phase conjugate adaptive resonance (PCAR). *We believe that PCAR is the basis for the most fundamental level of perception in all living organisms in the evolutionary tree of life* (Mitchell 2001). As an example, think of bats, dolphins, and whales that use sonar to send out signals and receive reflections back to locate targets. PCAR is the brain analog of that process.

Resonance Imaging (MRI) machine similar to the ones used in medical diagnosis. In the left column (labeled "A") in the middle and bottom row of pictures, the outside and inside respectively of the entire interference pattern shown in A (top row) have been removed to show the reduced resolution of B, compared to B (top) to illustrate A's holographic nature.

Quantum holography operates similarly in that quantum emissions from complex matter, for example, bio-matter, carry information about the entire organism. Stem cell research supports this concept. The fact that living cells in any organism evolve and grow from more simple stem cells, implies quantum entanglement throughout the organism and its composite parts, with associated instantaneous exchange of information through PCAR. Thus some information about the entire organism is carried in the quantum emissions from its parts.

For those readers who are familiar with recent developments in ground-based astronomical telescopes, a problem that has plagued astronomers since the invention of the telescope has been dealing with the aberrations in the telescopic images caused by the shimmering from the earth's fluid atmosphere. Recent developments in laser technology and high-speed computing have allowed astronomers to eliminate these aberrations. A coherent laser beam is targeted to follow the same path that the telescope is focused on. As the laser beam is reflected off the shimmering atmosphere back to a receiver, the phase delay in the returning signal is processed and compared in real-time against the reference beam transmitted. This comparison enables the computer to correct for aberrations with the telescope's optical imaging system caused by the atmospheric distortions. The result is that we are now able to receive clear images on earth-based telescopes just like we can do with the Hubble Space Telescope which, of course, is outside the earth's atmosphere. This concept of self-correcting optical imaging telescopes is not unlike the PCAR process described above.

PCAR is necessary for the brain to perceive objects as they really exist in three-dimensional space. If the brain had to rely solely on the visible light spectrum that was reflected off the external object and onto the retina of the eyes, the object would appear two-dimensional just as it would be if a picture of the object was recorded photographically with a camera. Contrary to the popular opinion that we see objects in three dimensions entirely because of binocular vision, just close one eye and observe an external object with the remaining open eye. The object appears "out there" and not as an image "in the brain" because of PCAR. This clearly presents a survival advantage to an organism allowing it to accurately see and locate objects (especially predators and food) in three-dimensional space.

Holographic processing is not restricted to processing sensory information in the visible light portion of the electromagnetic spectrum but it applies to enhancing all of the five normal senses. Consider snapping your fingers. The sound seems to originate from the location of the fingers in 3-D space and not at a point within the brain. As before, this experience results from the fact that the signal carrying the sound to the brain is resonating with the conjugate virtual signal created in the brain.

Max Planck, considered by most as the founder of Quantum theory solved the problem of the so-called ultraviolet catastrophe in the late 1890's. He postulated a theory, now known as the Planck postulate, that electromagnetic energy could be emitted or absorbed only in discrete quanta which formed the basis of the description of black body radiation. This was ultimately extended and used to describe how all matter absorbs and reemits photons (quanta of energy) from and into the quantum foam of the zero-point field (ZPF) that pervades all matter and even the vacuum of space (Haisch et al. 1997). Normally these emissions are random exchanges of energy between particles and the ZPF. However, the emissions from complex matter (e.g. living organisms) have been shown to exhibit quantum coherence and also carry information non-locally. Recall that the quantum phenomena of non-locality imply instantaneous transmission of information across space and time (Darling 2005).

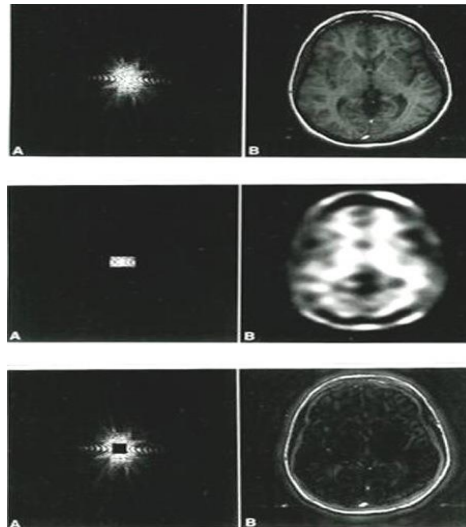


Figure 2. Quantum Hologram. Illustration retrieved from:
<http://www.bcs.org.uk/siggroup/cyber/quantumholography.htm> with permission

Figure 3 is an illustration describing the PCAR process. Emissions from the object of attention (e.g. the apple) are received (e.g. input) by the brain. The brain in turn creates phase conjugate (mirror image) "virtual" waves to identify the object. The standing wave that results allow the brain to locate and associate the object in space. The standing waves are created by the interference of the two waves traveling in opposite directions. Recall that standing waves are waves that do not appear to propagate but are fixed in position and just move in the vertical direction about the zero point on the reference line. This standing wave creates the resonant condition that allows the brain to process the information so as to locate the object in 3-dimensional space.

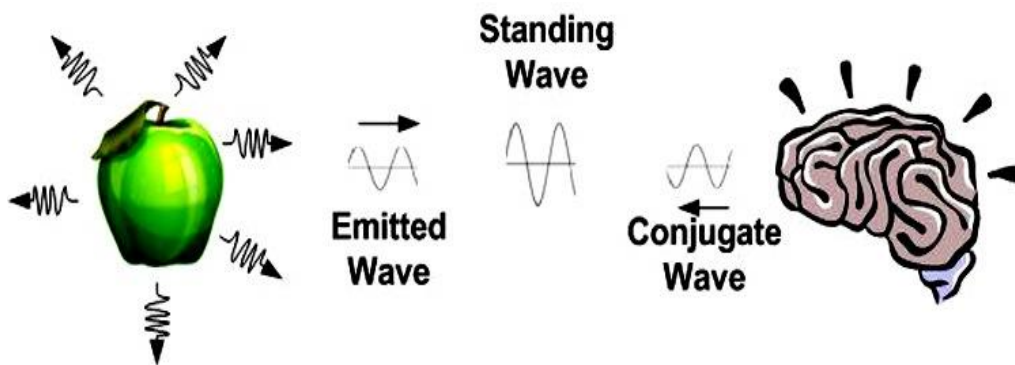


Figure 3. - The PCAR Process

4. Quantum Emissions and Non-Locality

As we shall demonstrate, non-locality also applies to macro-scale objects and is referred to in this paper as a "group" phenomenon (Schempp 1998 and 2008). As a simple example, consider visiting a sacred place of worship such as the Notre Dame Cathedral in Paris. As one enters the cathedral, it is hard not to feel a sense of hush, awe, and reverence. Over the centuries, countless people have entered this majestic cathedral with these very feelings. And these feelings were literally absorbed by the structure over the years through the process of quantum emission from the people and resonance with the very atoms and molecules of the cathedral structures. The longer the exposure to this resonance, the more coherence has been achieved with the molecules and atoms in the structure. This coherence re-manifests as emissions back into the environment which then resonate with the visiting people (via the cellular mechanism proposed above) entering the structure. The result is the subjective feelings of hush, awe and reverence which is exactly what a visitor experiences when entering the cathedral. This is another example of PCAR.

In Figure 3, we showed the emissions from the apple resonating with and being absorbed by the brain. However, the opposite is also true. The associated biomass of the entire body is also emitting coherent quantum fluctuations that are being absorbed by the apple and is therefore having some effect on the apple as well. Now add in everything else in the environment surrounding the apple and the human, which would lead one to conclude that every object, in some sense, has an effect on every other object. Like it or not, we appear to live in a participatory universe - there is no such thing as pure objective reality and we influence everything that we interact with. Perhaps this is the same mechanism why we "feel" positive energy from some people while others seem to emit negative energy.

Quantum Holography (QH), which we have alluded to several times above, is a recently discovered attribute of all physical matter and has been validated by experimental work with functional magnetic resonating imaging (fMRI). In his work with MRI tomography, Schempp (1999) used a mathematical formalism to expand quantum information theory. He validated his approach by significantly improving the definition and specificity of MRI and, in the process, discovered the inherent information content of the emitter-absorber model of quantum mechanics. This work provides a model to understand quantum level information processing of biological systems, specifically how the reception and processing of information leads to the functions of memory, awareness, attention and intention. We extend Schempp's work and postulate that all the cells of any biological entity and all its other organ systems, including the brain, have evolved as a massively parallel, learning, computing system. And the key ingredient of understanding this computing system and its processes is the quantum hologram which we will now describe.

As we have previously described, quantum emissions from any material entity carry information non-locally about the event history (e.g. an evolving record of everything that has happened) of the quantum states of the emitting matter. Recall that these quantum emissions are in the form of EM waves of many different wavelengths (or frequencies if you prefer) and that the information associated with these emissions is contained in both the amplitude and the phase relationships of the emitted waves as interference patterns. This is similar to the way that information is stored in the interference pattern on a holographic plate as described previously. These interference patterns can carry an incredible amount of information including the entire space-time history of living organisms.

5. The Quantum Hologram

Mounting evidence seems to indicate that every physical object (both living and nonliving) has its own unique resonant holographic memory and this holographic image is stored in the Zero Point Field (Marcer et al. 1997). Information in the ZPF is stored non-locally and cannot be attenuated.

Furthermore, this information can be picked up via the mechanism of resonance as we described above. This information, its storage, and its access is collectively called the Quantum Hologram (QH). We can think of an organism's QH as its nonlocal information stored in the ZPF that is created from all the quantum emissions of every atom, molecule, and cell in the organism. Every objective or physical experience, along with every subjective experience is stored in our own personal hologram and we are in constant resonance with it. Each of us has our own unique resonant frequencies or our unique QH which acts as a "fingerprint" to identify our non-local information stored in the zero-point field. Since the event history of all matter is continually broadcast non-locally and stored in the QH, the QH can be viewed as a three-dimensional vista/movie evolving in time which fully describes everything about the states of the object that created it. Not only do we each have our own unique QH, but it is also possible for others to tap into parts of it through resonance. We shall develop this idea more fully later in this paper.

To illustrate how resonance with an object's or living organism's QH might work, consider the following example. Take two identical guitars, tune the corresponding strings on each guitar to the same frequencies and place them on the opposite sides of a room. Now pluck a string on one of the guitars and notice what happens to the corresponding string on the guitar at the other side of the room. It will begin to vibrate in resonance with the first guitar. This is not unlike the example with singer Ella Fitzgerald and the shattered champagne glass that has been popularized on TV commercials several years ago. It turns out that the vibrating strings on each guitar will produce a standing wave. The vibrations cause the wave to travel down the string (incident wave) to the point where the string is attached to the guitar. The wave will reflect off that point (producing a reflected wave) and travel back in the opposite direction as a mirror image of the incident wave. As the waves meet they will interfere with each other and produce our standing wave which is then propagated through the air.

Now add a third identical guitar with the corresponding strings also tuned to the identical frequencies as the other two. If the corresponding strings on each of any two of the guitars are plucked simultaneously at the same point on the string, the corresponding string on the third guitar will again begin to vibrate as before but with one slight difference. Since both plucked strings were struck at the same point and at the same time, the sound waves produced from each will constructively interfere and reinforce each other in the air resulting in sound waves of greater amplitude. So as before, the string on the third guitar will begin to resonate again but this time with greater amplitude. This assumes that the guitars are placed at appropriate locations such that the sound waves from the other two guitars arrive so that the waves arrive in phase. The result will be that they will constructively interfere with each other. If the distances are such that the signals arrive out of phase and destructively interfere, they may cancel out at the third guitar.

Now, repeat this process adding a 4th guitar with the proper placement and so on. In each case, the amplitude of the resonating standing wave will continue to increase (unless the responding guitar string should happen to break from the large amplitude of the wave it is receiving). This analogy of the strengthening of the resonating wave shall be of particular importance when accessing information stored in the ZPF. The simple reason is the larger the amplitude of the standing wave, the easier it is for another object to resonate with it.

The analogy of the guitars is similar to how information is stored in the Quantum Hologram with the ZPF. Since the brain operates as a massively parallel quantum computer. The brain does this by setting up a resonant condition with microtubules scattered throughout the brain tuned to the same frequency as the standing waves of the same frequency located in the ZPF. As we mentioned before every macro-scale physical object in nature has its own unique quantum hologram. It exists in 4D space-time reality

and space-time reality and is a non-local information structure that never attenuates. And, most importantly, it carries the entire event history of the physical object it was created from or, in the case of living organisms, the entirely subjective and objective reality experienced by that organism. All this information about the entity is carried in the amplitude, frequencies (e.g. wavelengths) and in the phase relationships of those waves from the emitted entity. Perhaps, most important of all, is the fact that the information stored in the QH is recoverable through the process of resonance not only with the individual organism that created it but with other organisms as well if they are "tuned" to it. This seems to happen most commonly in humans when strong emotional connections exist between the two.

Note that we are not suggesting that we are all virtual beings living in a "literal" holographic reality as interference patterns on nature's holographic plate. We are all real beings living in a very real material existence consisting of matter, energy and information just as we experience it. Also the quantum hologram is not about the discovery of some new kind of subtle energies such as "élan vital", qi or prana suggested by many throughout history. Neither is it about multidimensional theories nor living in other planes of existence other than our normal 4-dimensional space-time reality. But this does mean that we now have a mechanism to describe how mind can manipulate matter. We will have considerably more to say about this later in this paper.

The Quantum Hologram is a model of how reality works. Like all models it enables us to make predictions and create interpretations about how nature operates. We can test those predictions to validate and refine the model and perhaps someday even design, build and utilize technologies that implement various aspects of the model's predictions. But the map is not the territory and, like all models, it must be refined as more information becomes available and our understanding improves. And, most importantly, models are subject to interpretation based on our prior knowledge and experiences.

Our QH model seems to explain many effects including aspects of mind, memory, stream of consciousness, various factors affecting health, psychic events, Jung's collective unconscious, the Akashic record and other phenomena that arise out of the resonance with the QH residing in the zero-point field. Before the discovery of quantum holography, we had no mechanism to model or account for these phenomena let alone for information transfers between objects that these effects imply.

We believe that QH is supported by both experimental and anecdotal evidence suggesting it is also a model that describes the basis for consciousness. It explains how living organisms know and use whatever information they know and utilize. It elevates the role of information in nature to the same fundamental status as that of matter and energy. In fact, the QH seems to be nature's built-in vast information storage and retrieval mechanism and one that has been used since the beginning of time. This would promote QH as a theory that is the basis for explaining how the whole of creation learns, self-corrects, and evolves as a self-organizing, interconnected holistic system. Since the laws of nature appear to be the same throughout the universe there is no reason that it should not also apply to extraterrestrial consciousness as well.

6. Applications & Implications of QH

We will now look at many previously unexplained phenomena and describe how they can all be explained with the quantum holographic model. Then we will attempt to describe some of the profound implications and ramifications which this theory leads. We will discuss anecdotal evidence, actual experiments, their implications, and potential further applications of the Quantum Holographic (QH) model. Before we begin, let us briefly summarize what was earlier in this paper. We described how QH describes a real phenomenon of nature that has been validated in the laboratory. We postulated that it is a description of reality that is based on a mathematical formalism (e.g. a theoretical model) of how nature implements and utilizes information, memory, perception, attention, and intention. Furthermore, we suggest that QH explains many phenomena in nature where no adequate mechanisms were previously known to describe them. This is particularly true in accounting for the transfer of information between material objects or between objects and their environment.

QH offers a hypothesis and convincing evidence that explains how living terrestrial organisms know and how they utilize information. In doing so, it elevates information to the same fundamental status throughout the universe as matter and energy. Furthermore, when energy, matter, and information are utilized in processes, QH leads us to the very basis of consciousness itself. So, perhaps the most profound implication of all is that the QH model provides a basis for explaining how the whole of creation learns, self-corrects, and evolves by being, in some sense, conscious of itself. In other words, QH describes the universe as a self-organizing inter-connected conscious holistic system.

We postulate that the storage mechanism for the Quantum Hologram resides in the zero-point field (ZPF). This field is ubiquitous, nonlocal, cannot be attenuated, lasts indefinitely (e.g. never loses coherence), can store unlimited quantities of information and any portion of it encodes the whole just as a hologram does. It can be thought of not only as nature's information storage mechanism but also as nature's information transfer mechanism. QH information is contained in the amplitude, frequencies, and phase relationships of the underlying interference patterns from the emitted quanta. This information is emitted and absorbed by all objects and exists in four-dimensional space/time reality. QH applies to all scale sizes from the smallest subatomic particle to the largest structures in the cosmos and takes place at all temperatures (even down to absolute zero). It exists simultaneously beneath the classical descriptions of how information is exchanged between non-living objects and below the normal five senses for living organisms.

For living organisms, QH applies to intra and inter communications between cells, organs and organ systems, and finally between organisms as well as with the larger environment as suggested by Lipton (2005) Sheldrake (1981) and several others. It applies to all living organisms on earth as well as to all biological entities that exist throughout the cosmos. Whether abiotic or biotic, the entire event history of all matter anywhere in the universe from the micro scale to the macro scale is being continuously broadcast non-locally by coherent quantum emissions. This history is also reabsorbed by (e.g. received) and interacts with all other matter and the ZPF through the exchange of quantum information.

The mechanism of QH applies to all of the cells of the human body (approximately 50-100 trillion) and answers the question that is often posed dealing with how all these cells cooperate and work together to make the whole human. While they are actively cooperating, thousands of cells are dying continuously every second; so many, in fact, that over the course of one week the body will have billions of new cells and yet you remain with the same memories and the same functionality and the same distinct features. How does that happen?

Every one of our cells contains the same genetic blueprint of DNA and clearly that DNA and environmental influences exert major influences over the development and functioning of our cells. But cells are not only subordinate to DNA; they also function and maintain homeostasis by communicating and cooperating simultaneously with many other cells of the body and by the information they receive from the environment. Much of this inter-cellular signaling is electrochemical in nature but biologists still struggle with some aspects of the mechanisms utilized in this information transfer. With up to 100 trillion cells it is hard to imagine how many cells can remain in harmony by the slow process of electrochemical signaling, especially in times of great distress when the survival of the entire organism is at stake and/or requires extremely rapid and coordinated responses.

The primacy of DNA as the master blueprint for an organism has been the central dogma for biology for a long time. There is now very convincing evidence that all organisms on earth from plants to mammals acquire characteristics through interaction with their environment and can then pass these characteristics on to their offspring (Lipton 2005). This process is called "epigenetic inheritance" and has spawned a new field in biology called epigenetics which is the study of the mechanisms by which the environment influences cells and their offspring without changing genetic codes. This is forcing scientists to rethink evolutionary theory and harks back to the days of Lamarckian evolution. Lamarck's theory, developed 50 years before Darwin, hypothesized that evolution was based on cooperative interaction between organisms and their environment. This interaction enabled these organisms to pass on adaptations necessary for survival as the environment changed.

Lipton states that "*results from the Human Genome Project are forcing biologists to the recognition that they no longer can just use genetics to explain why humans are at the top of the evolutionary ladder on earth. From this effort, it turned out that there is not much difference in the total number of genes found in humans and those found in primitive organisms*". So where does the information come from that defines who we are? Lipton further goes on to state that "*cellular constituents are woven into a complex web of crosstalk, feedback and feedforward communication loops and that thousands of scientific studies over the years have consistently revealed that EM signaling affects every aspect of biological functioning*".

How does this mechanism work? Could QH offer an explanation? In addition to DNA and environmental influences in all earth-based living organisms, inter-cellular communication is especially critical in embryonic development. From a single fertilized egg, the embryo divides thousands of times and each time producing identical offspring cells called stem cells. Then at some critical point when the embryo has reached a certain size, something truly miraculous happens. Cells begin to differentiate and form groups of like cells that will eventually become all the highly specialized tissues and organs that make up the human body. Out of the entire mass of undifferentiated cells making up the embryo, how does a particular stem cell suddenly know that it is to transform into a heart cell, liver cell, neuron, etc? Clearly, some of the differentiation results from electrochemical signaling with the immediate surrounding cells. This exchange is certainly necessary and provides information about how a cell must change to express itself correctly to become the right type of cell at the right place and at the right time. But is it possible that this signaling, by itself is not sufficient to explain the full development of the embryo into a complete organism?

Sheldrake (1997) studied this problem and has proposed a theory called the Hypothesis of Formative Causation. It describes an alternative explanation for how the structure and form (morphology) of an organism develops. In his model,

developing organisms are shaped by fields that exist within and around them and these fields contain the form and shape of the organism. He proposes that each species has its own information field, and within each organism, there are fields nested within fields. All of these fields contain information derived from previous expressions of the same kind of organisms. He further states:

That a field's structure has a cumulative memory, based on what has happened to the species in the past. This idea applies not only to living organisms but also to protein molecules, crystals, and even to atoms. In the realm of crystals, for example, the theory would say that the form a crystal takes depends on its characteristic morphic field. Further, the morphic field is a broader term that includes the fields of both form and behavior.

Sheldrake's view is that nature forms habits (e.g. memories) and over time these habits strengthen and influence following generations. Similarly, other habits atrophy over time from lack of continued use. In fact, Sheldrake is not alone in proposing such a mechanism. The great psychologist Carl Jung has proposed "the collective unconscious" which represents a vast information store containing the entire religious, spiritual, and mythological experiences of the human species. According to Jung, these archetypes have existed since ancient times and are inherited where they exist deep in the human psyche and heavily influence the thinking mind. In a similar manner, Teilhard de Chardin proposed the concept of the "noosphere" which represents the collective consciousness of the human species that emerges from the interaction of human minds. De Chardin asserted that as individuals and the global society evolve into more complex networks, the noosphere evolves along with it.

Finally, there is the Akashic record which was developed in the Sanskrit and ancient Indian culture. It is described as an all-pervasive foundation that contains not only all knowledge of the human experience but also the entire history of the universe. Our normal five senses cannot access this information but it can be accessed through spiritual practices such as meditation. In the last few years, Laszlo (2004) has also been promoting a theory he has named the A-field which contains many aspects that are also very similar to the concepts described in this paper. All these concepts imply a mechanism very similar to our description of QH.

7. Resonance and the Quantum Hologram

Whatever name this mechanism is called, we postulate that the primary means for accessing transcendent information is via the process of *resonance*. Remember, that since the laws of nature appear to operate the same everywhere in

the universe there is no reason to conclude that QH would not also apply to biological entities anywhere in the universe. In higher organisms with brains, the massively parallel processing capabilities of the brain structures are capable of simultaneously resonating with QH information at an incredible range of frequencies. This is shown in Figure 4 where the effects resulting from varying degrees of resonance with the QH is depicted.

The simplest form of resonance (e.g. entanglement) is shown on the left side of the graph. Moving to the right we show phenomena that manifest with increasing degrees of resonance and frequencies. We have included several phenomena on this graph such as Out-of-Body-Experiences (OBEs) and reincarnation but, as we shall soon see, our explanations of them are based on QH theory and require a different interpretation than those commonly found in popular literature. Finally, we shall describe how the degrees of resonance can occur along with techniques to facilitate them.

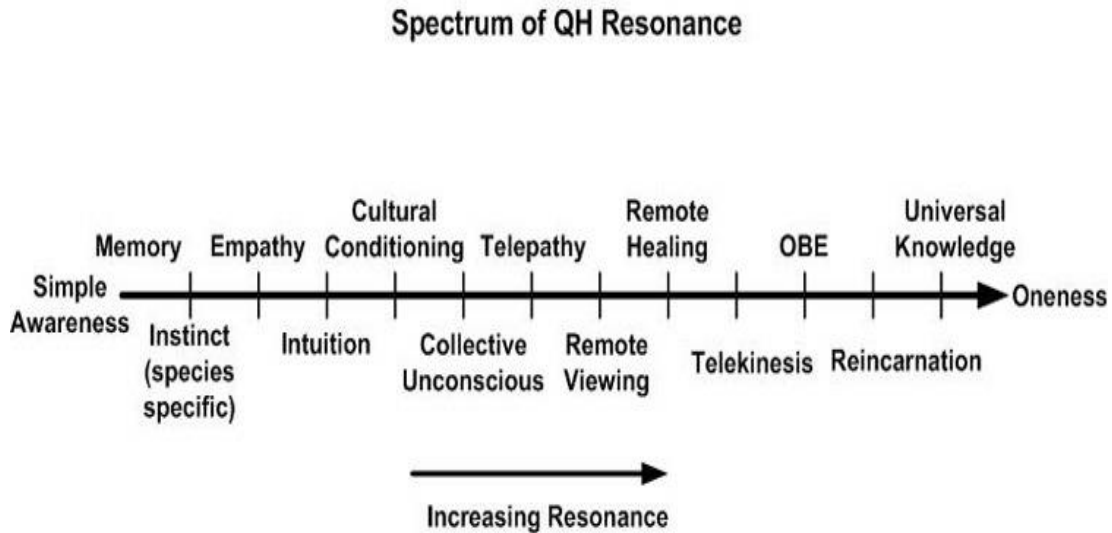


Figure 4. - RESONANCE SPECTRUM

We have indicated earlier that information is nothing more than what is contained in patterns of matter or energy. The meaning that is derived from these patterns is developed in the mind of the percipient based on prior experience (e.g. knowledge and memory). In other words, all events are subject to interpretation, and that in turn is based on the prior experiences and beliefs of the percipient. The more knowledge and experience we gain the more likely we will interpret an event closer to actual reality.

Changing beliefs especially when they are not based on knowledge but instead are based on faith, however, are another matter entirely. For example, in colonial America, most people attributed thunder and lightning to evil spirits. At that time the obvious solution to the problem was to ward off the evil spirits by ringing church bells. Needless to say, that was not very effective. More than a few well-intentioned souls were electrocuted while in the bell tower ringing those bells. We now know that the premise of evil spirits is totally incorrect and that thunder and lightning are merely the results of electrostatic discharges between the atmosphere and the ground. How did we get to this understanding? We evolved our understanding and beliefs by investigating and learning about how nature really works through trials, by observation, and by experimentation (remember the Ben Franklin experiments with kites we learned about in grade school).

8. Experimental Evidence

We shall now describe some of the experiments testing the concept of non-locality and their findings. There is considerable experimental and anecdotal evidence, although some of it controversial, to suggest that simple organisms perceive and respond to nonlocal information. In the area of human experimentation, results have likewise been mixed for much of the last 75 years. However meta-analysis by Radin (1997) and independently by Utts (1991) across a large and appropriate spectrum of experiments demonstrates compelling statistics that the perception of non-local information exists and is real. A meta-analysis is a new tool that has become essential in many of the soft sciences including ecology, psychology, sociology, and medicine. The essence of meta-analysis is that outcomes of collections of previous experiments are analyzed by statistical methods which combine results from different existing studies that address a set of related research hypotheses.

Perhaps if there were a larger body of experimental evidence for simple life forms, similar results of meta-analysis would emerge. Failure to replicate results in well-constructed experiments does not, in the case of subtle consciousness phenomena, prove that the phenomenon is missing but rather that a hidden mechanism below the threshold of classical measurement may be operating. For example, the most telling experimental evidence to explain the sometimes inconsistent results relates to direct nonlocal and/or experimenter effects. These effects are unintentional biasing effects on the results of an experiment caused by the expectations, beliefs or preconceptions on the part of the experimenter.

Schmiedler (1972) isolated the "sheep/goat" ("sheep" is a label for believers and "goat" is a label for non-believers in psychic experiments) effect in human experiments decades ago. Experimenters and /or participants in human telepathy (or similar nonlocal) experiments exhibited results statistically above or below chance results depending on their subjective bias towards the experiment. In other words, 100% wrong answers would be as statistically significant as 100% correct answers in such tests, and in addition, would betray the mindset or intention of the subject whereas only chance results would be inconclusive. More recently, a series of experiments by Schlitz (1997) investigating intentionality clearly demonstrated that experimenter bias (intentionality) affected the outcome even in double-blind experiments. Thus, in the subtle realms of mind and consciousness studies, bias, belief, and intention clearly have an effect.

The lack of an existing theoretical structure in classical science to support any type of perception of non-local information, much less to support bias, belief or intention as having a nonlocal effect, is quite sufficient to account for anomalous results in many scientific experiments. The prevailing dogma of classical science against any type of non-local action at the level of macro-scale reality has not prevented experiments from successfully being conducted. It has sometimes caused positive results to be dismissed as anomalous, of faulty design or outright fraud when in most of these cases the results were defensible had proper nonlocal theory been available.

Radin (2006) describes a series of experiments conducted in the latter half of the 20th century on a whole range of psychic phenomena that suggests that experimenters are obtaining far more correlations than can be expected by chance. This was done by performing meta-analyses for random number generators (RNG) studies subjected to psycho-kinesis (PK) intention which resulted with the odds against chance of 35 trillion to one over the entire database. This analysis followed a decade long series of experiments by Dunne and Jahn (1988) at Princeton University provided overwhelming evidence that human subjects could produce statistically skewed results in mechanical processes normally considered to be driven by random processes. A similar study with Ganzfeld meta-analysis by Radin demonstrated results with odds against chance of 29×10^{18} to one (e.g. one chance in 29,000,000,000,000,000,000). Radin goes on to describe several other studies showing similar results.

Radin has also discovered that audiences watching stage performances would skew the output of random number generators during periods of high emotional content in the performance. In a wide-ranging audience participation experiment, he recorded the output of computer random number generators during the television broadcasts of the O.J. Simpson murder trial. Most television news programs covered this event live for weeks on end with millions of viewers. Again, the results of random number generators set up to monitor this event were skewed corresponding to emotional peaks during the trial drama and corresponding to the number of people watching. A similar effect was noted on 9/11/2001 at the time of the World Trade Center disaster in New York City.

The thesis in the Princeton experiments was that participant intentionality created non-random effects to bias the skewed distribution. In the Radin experiments, the results were not the result of intentionality because the participants were unaware of the experiment, but his hypothesis was that rapt attention drove the system away from randomness and toward greater order. These results suggest that attention and intention provide closely correlated outcomes and further, that randomness may not be a property of nature but what may be perceived as random noise in a system may just be awareness that is not in resonance at that moment with the particular perceptual system.

Many types of mind-to-mind or mind-to-object experiments have been rigorously and routinely conducted for decades with statistical significance but they are often dismissed or ignored by mainstream science because the implications of non-local action are so foreign to the mainstream view of objectivism and the possibility of mind-matter interactions. However, if we consider the condition of resonance is necessary (specifically PCAR as described earlier), then we must also consider the perceived object (e.g. the target) and the percipient's perceptual system as entrained in a phase-locked resonant feedback loop. The incoming wave from the target carrying the emitted information may be labeled as "perception" from the view point of the percipient, and the return path may be labeled as attention (or intention) depending on what the percipient is trying to achieve. Note however that this is a two-way street, the act of perceiving also affects the target object being perceived! Therefore, we do live in a participatory universe. There is no such thing as pure objectivity.

In the case of non-local effects at a distance, outside the body, simple correlation of entangled particles is the most basic form of perception. And these correlations between entangled particles are reciprocal. Action on one particle creates an effect on other entangled particles instantaneously and even across large distances. This phenomenon is no less important for macro-scale objects.

Sheldrake (1999) conducted experiments with dogs whereby the animals correctly anticipated their owner's departure from a remote location to return home. He has also conducted other successful experiments on previously unexplained behaviors of animals. In one example rats that were learning to traverse a new maze benefited non-locally from the experience of others that had previously learned the maze in the total absence of classical space-time information. Other examples include distant (e.g. nonlocal) awareness of deaths and accidents, animals that heal humans, and those sensitive to forebodings of natural disasters.

It is not surprising then, that humans exhibit an even wider range of reactions to non-local information. The evidence suggests that humans can perceive, recognize and

give meaning to nonlocal information across a broad range of complexity, from inanimate objects, simple organisms, animals, and other humans (refer to Figure 4). The existence of QH provides an adequate informational structure to permit a theory for the observed results. This is a classical example, where results are repeatedly observed over time that fall outside the prevailing paradigm and must await new developments in science before the phenomenon can be adequately explained. Perhaps this explains psychic abilities.

In humans, it is a well-established meditation principle that prolonged focused attention on an object of meditation causes the percipient and the target object to appear to merge so that a much deeper level of understanding about the object is obtained. This includes information such as its history or internal functioning that would not be available through classical space-time information. The quantum holographic theory describes how this phenomenon might take place. Further, it is accepted that the mind and associated brain with its 100 billion neurons function together as a massively parallel pattern matching (e.g. information) processor, capable of performing many tasks simultaneously. Most of this processing is done subconsciously or in the right hemisphere which is attributed to the intuitive part of the mind.

Conscious focused attention is a unique and singular task that takes place sequentially mostly in the left hemisphere in the cognitive part of the brain. The condition of attention deficit disorder (ADD) is precisely the problem of a percipient being unable to maintain a singular focus for a sufficient time to complete a desired task or observation. Thus the action of focusing attention by a percipient may be construed as a necessary condition for resonance (PCAR) to be established with the perceived object. Even for people with such a handicap, reducing stress, eliminating distractions, and quieting the mind via meditation may also improve one's ability to focus thereby improving the resonance condition.

Healers typically report such a focusing to create a resonance with the object of their healing activities. Once in resonance, they often report sensing in their mind some sort of picture which appears as a type of 3-D holographic image. They maintain that diseased or damaged tissues in the target often appear as fuzzy or appear somehow different from the normal tissue surrounding it. Sometimes they describe it as sensing energy blockages. They claim to be able to focus energy or somehow manipulate (e.g. intentionality) the diseased tissue which over time causes the image to change and take on the same characteristics of the healthy tissue surrounding it. Could this be the result of the act of intention of the healer resonating with the quantum emissions and subsequent absorptions by the diseased tissues?

Healers and other psychically sensitive individuals often enter into resonance with the object of their focused attention (or intention) by using an icon (e.g. a representation of the object of interest).

Similarly, people praying for others (not in a religious sense of supplication to a higher being) are suggestive of initiating a non-local resonance process with a target object. Healing prayer has existed in all cultures for millennia. If prayer did not produce some positive results, it is likely that religion would have abandoned it centuries ago. For most of its history healing prayer was attributed to supernatural agency rather than resonance with the target's QH. This is simply another example of phenomenology waiting while science catches up as in our colonial lightning example above.

In recent times Dossey (1993) and many others have attempted to document the efficacy of prayer, particularly healing prayer. Some claim the results establish the case for healing prayer. However, the difficulties of controlling all the variables, the experimenter effect, etc. in such clinical studies leave many avenues for valid criticism. The fact that Radin's many studies demonstrated that attention alone produced non-local results in REGs (random event generators) and other machines in reducing randomness (e.g. increasing order) confirms that information has a nonlocal effect and may be correctly formulated as negative entropy. These results apply to healing prayer as well. In these cases, icons are often used to facilitate this resonant process. Icons can be an image, picture, representation or an article associated with the target object of the intention. What each of these modalities has in common is that they appear to provide a mechanism for the intender to "tune in" or resonate with the target. Touching an icon seems to satisfy the resonant (PCAR) requirement and probably allows the intender access to the information about the target not available from normal space-time information. Police agencies often use this modality with psychics who then focus their attention to gain information about a crime scene often with considerable success.

Healers and people praying may also utilize icons but in this case with focused intentionality to resonate with the person to be targeted by similar means. The use of icons to retrieve nonlocal information also suggests an explanation of water memory and homeopathy. Molecules of toxic substances from an original solution are removed by serial dilution. Could some of the water molecules resonate with the emitted photons from the original toxic substances and later resonate with the human immune system when absorbed by it?

If, as required in the theory of the Quantum Hologram, the icon has been in the presence of the individual or contains the signature of the person about whom information or healing is desired, the event history of the icon and that of the individual intersect. The phase relationships of the quantum emissions of the icon contain a record of the target object's journey in three-dimensional space and time, as well as the quantum states through which it has passed on this journey. The sensitive individual, with a honed talent, often seems to be able to decode the information coded in these phase relationships of the photons emitted from the icon about the individual or object sought. It may also be the case with the bloodhound that additional non-local information has been gained about the subject, even though the classical explanation is that the animal is operating only with heightened olfactory sensing.

Although perception in the three-dimensional world requires and utilizes resonance (PCAR), most humans do not routinely bring to conscious awareness non-local information when operating in ordinary three-dimensional reality. We perceive objects as presented by space-time information, that is, shape, color, function (tree, chair, table, etc) but are not usually aware of the additional non-local information (location in space, threats, etc) unless there is strong emotional connection. Consider the case of an infant separated from its parents during time of war or unprecedented disaster. Years later, by a chance reunion, the now unfamiliar child and/or birth mother sense a strong connection while others sense nothing. Could this be because of the resonance between mother and child during pregnancy and through the birth process?

It usually takes training as provided by many esoteric traditions and/or certain naturally sensitive individuals to routinely perceive the non-local holographic information associated with a particular target object. There is considerable evidence to suggest that the brain/mind has these latter capabilities at birth. The development of language, suppression of these capabilities by cultural conditioning and subsequent lack of practice all contribute to the atrophy of natural ability of conscious, intuitive perceptions. Perhaps cultural conditioning is one of the reasons why so-called reincarnation experiences are so common in children in eastern cultures while virtually unheard of in the west. The late Dr. Ian Stevenson (2001) of the Department of Psychiatric Medicine at the University of Virginia traveled around the world and investigated children usually from the ages between 2 and 5 who claim to have lived previous lives.

"At the same time, they have often displayed behaviors or phobia that were either unusual in their family or not explained by any current life events. In many cases of this type, the child's statements have been shown to correspond accurately to facts in the life and death of a deceased person; in many of these cases the families concerned have had no contact before the case developed."

Our view is that although the reincarnation event is a real non-local event experienced by the child, the interpretation of the event is not correct. We believe that the person is in a high state of resonance with the quantum hologram of the deceased and is able to retrieve QH information about the deceased from that resonance condition. As the child ages, rational left brain processing begins to dominate and the child is no longer able to resonate with the QH of the deceased unless the child has been trained to maintain that state of altered consciousness. We would attribute a similar effect with someone who experiences an out-of-body experience (OBE). Again, this most likely represents a high state of resonance with the remote location and the experiencer is retrieving and processing the QH of the objects at the remote location being visited non-locally.

In cases like the ones just described, meditators, mystic adepts and natural psychics routinely demonstrate that non-local information is perceptible from physical objects and icons by focusing attention, quieting the left brain and allowing intuitive perceptions to enter conscious awareness. Those most practiced in meditation experience an altered sense of space-time, the dissolution of self, have access to universal knowledge and sometimes feel a unified sense of oneness with all of existence. Along with this sense of oneness comes a feeling of immense bliss and a great clarity of mind. We postulate that they have entered into a state of high resonance with the QH and have access to all the information that is implied by such unification. This seems to describe the epiphany that I (Edgar Mitchell) experienced on my return flight from the moon.

Particularly in the western tradition, academic interest has been on the left brain or rational processing rather than right brain intuitive functions. It is the left brain cognitive ability in humans that provides acceptable labeling of the intuitive, creative, and artistic processes taking place in the right brain. Given the fact that with training and practice, all individuals can reestablish and deepen their cognitive access to intuitive, non-local information demonstrates that learning recall is taking place within the whole brain itself and involves enhanced coherence and coordination between the hemispheres and with the QH. This process is different and distinct from the left-brain function of extending and extrapolating factual data and forming conclusions based on logical deduction to leap to an "intuitive" conclusion while omitting the immediate steps leading to that conclusion.

When an object or person of interest is not in the immediate vicinity of the percipient so that space-time information obtained by normal senses is unavailable for receiving and interpreting nonlocal information, the method is somewhat different in obtaining resonance with the target. The case in point is the subject of Remote Viewing (RV) which is another latent ability we all have to some degree. RV allows us to describe and experience activities and events that are normally precluded from us with ordinary perception from our normal five senses.

Remote viewing has been researched extensively by Putoff (1996) and Putoff and Targ (1976) at Stanford Research Institute since the mid-1970's. Their work attracted the attention and funding from the U.S. Central Intelligence Agency and was conducted in secret for almost 20 years. Some of the work involved exploring the limits of what remote viewing could do and also in improving the quality and consistency of the result. Much of the remainder of the effort was in training operatives to collect intelligence information against foreign adversaries. The government funding of the effort ended after the collapse of the Soviet Union in the 1990's.

For the purposes of our discussion with RV, the questions we are interested in pertain to the "reference signal" used to decode the quantum holographic information in the absence of any classical space-time signals and also how the condition of resonance (PCAR) is established by the percipient. Experimental protocols from RV normally provide clues to the location of the target object such as a description, a picture or location by latitude and longitude or an icon representing the target. These clues seem to be sufficient for the percipient to establish resonance with the target. Space-time information (as perceived by the normal five senses) about the target is not perceived by the percipient, nor does the object usually appear at its physical location in space-time like a photograph or map in the mind. Rather the information is perceived and presented as internal information and the percipient must associate the perceptions with his / her internal data base of experience in order to recognize and describe the target's perceived attributes.

In the case of complex objects being remotely viewed, the perceived information is seldom so unambiguous as to be instantly recognizable as correct. Sketches, metaphors, and analogies are usually employed to recognize and communicate non-local information. A considerable amount of training, teamwork, and experience are necessary to reliably and correctly extract complex nonlocal information from a distant location. The information appears to the percipient as sketchy, often dream-like and wispy, subtle impressions of the remote reality. Very skilled individuals may report the internal information as frequently vivid, clear and unambiguous. The remote viewing information received in this case is strictly non-local and, based on the hypothesis of QH, the received information is missing the normal space-time component information from any of the five normal senses about the object necessary to completely identify and specify it via resonance.

It has been demonstrated that this intuitive mode of perception can be enhanced by training in most individuals. Perhaps additional training and greater acceptance of this capability will allow percipients to develop greater detail, accuracy, and reliability in their skill. In principle, training will not only enhance the remote viewing skill and its accuracy but should also cause the associated neural circuitry to become more robust as well.

In the absence of normal perceptual sensory signals such as light or sound to establish the resonance condition to provide a basis for decoding the target object's quantum hologram, an icon representing the object seems to be sufficient to allow the mind to focus on the target and to establish the resonant (PCAR) condition as we have described earlier. However, a reference signal is also required to provide decoding of the encoded holographic phase dependant information. It has been suggested by Marcer (1998) by that any waves reverberating through the universe remain coherent with the waves at the source, and are thus sufficient to serve as the reference signal to decode the holographic information from any object's quantum hologram emanating from a remote location.

We conclude our discussion of potential QH applications with the experiments conducted by George De La Warr in the 1940s and 1950s. De La Warr was a British engineer who became interested in understanding the mechanisms associated with remote diagnosis and healing. His work was documented by Day (1966) in the 1960s. De La Warr began experiments with his wife, an accomplished psychic healer, to detect the radiation emitted in such processes. At first, he thought this mechanism was related to some form of EM radiation but later realized that it was associated with resonance. He eventually built a diagnostic device that acted as a resonant cavity. Perhaps the strangest aspect of the discovery was that when the device was operated by his wife, she could focus her attention on a living target object and was able to produce a resonant condition between the target and the measuring device. She was also able to "project" this resonance condition and expose a blank photographic plate. She was eventually able to pick up resonances from plants, trees, humans and even diseased tissues.

Over time the De La Warrs built up a library of several hundred such photographic plates. Many years later Benford (2008) came across this library and had some of the photographs analyzed by modern 3-D CAD/CAM software (Bryce® 4). The analysis showed that the images were spatially encoded with a 3-D effect similar to those produced by fMRI machines but with much higher resolution. (Earlier we described the discovery made by Shempp that fMRI machines encode quantum information holographically). Recall that fMRI machines were not in existence until many years after these photographic plates were exposed by Mrs. De La Warr. These experiments along with recent discoveries associated with fMRI machines seem to provide compelling evidence that macro-scale quantum holography is a real phenomenon and is produced by conscious attention and intention by a percipient on objects of interest.

9. How Nature Learns

We end this section with our model of QH summarizing how nature (and all living entities) perceives, learns, adapts, and evolves in its environment. This model is shown in figure 5. In this model, we show how establishing resonance (PCAR) between a percipient and a target object, the phase conjugate (mirror image) signaling paths connecting the two, can be labeled "perception" on the input side and either "attention" or "intention" on the output side. In the case where the object is a simple physical object (like an apple), our interest is on the non-local information perceived by the percipient about the apple. However, from the point of view of the apple, information about the percipient is also available to the apple. The resonant condition between the two is a reciprocal relationship.

The Quantum Holographic model predicts that the history of events of the target object (apple in this case) is carried in the apple's QH which implies that the "attention" or "intention" focused on the apple by the percipient causes that event to be recorded in the apple's QH. Clearly, we cannot query the apple to inquire about its experience but none-the-less the interaction will create a phase shift in the apple's QH (interference pattern) which should be detectable. Although we are using anthropic labeling as we are discussing human perception with the apple, this phenomenon is rooted in natural (and primitive) nonlocal physical processes which are fundamental to the interaction between all objects whether living or not. The evolved complexities of perception, cognition, etc., associated with the brain, as yet have no obvious analogous label other than "non-locality and entanglement" to describe the interactive experience with the environment for simple objects like apples.

Nature's Learning Mechanism

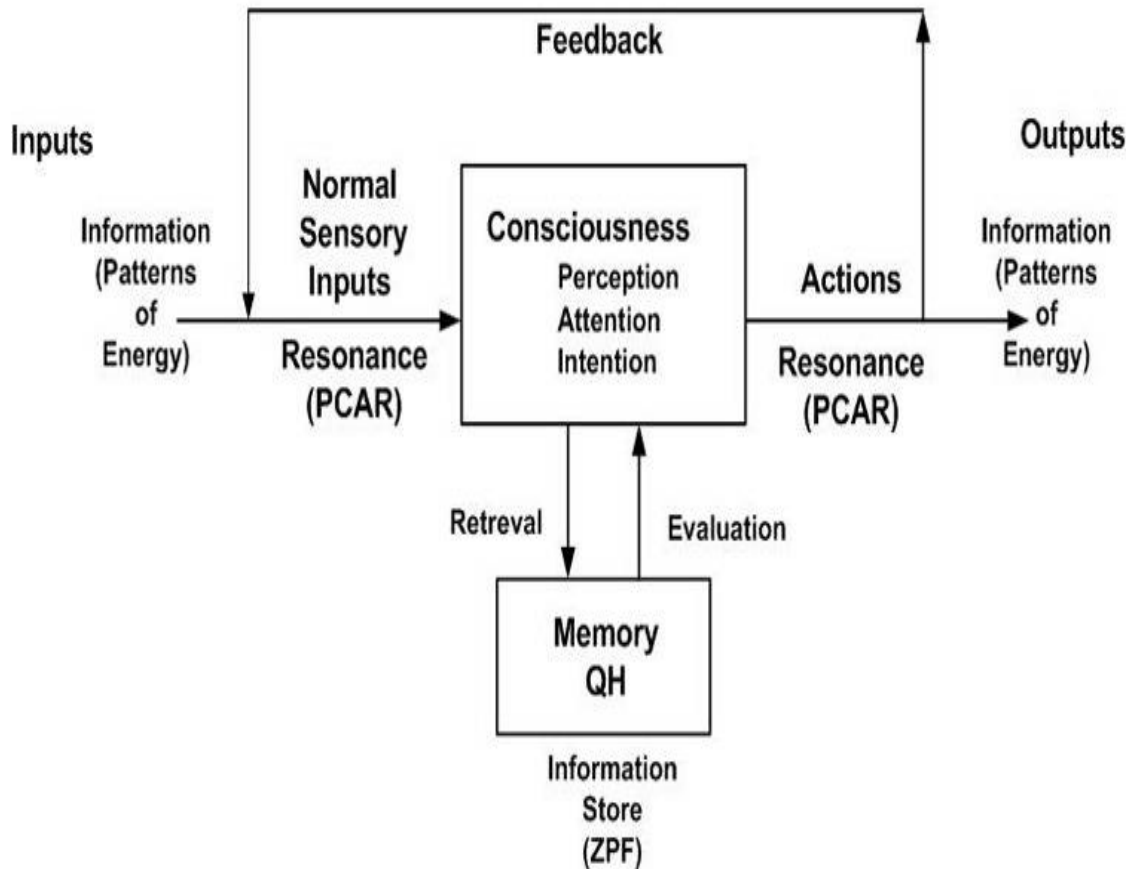


Figure 5. - How Nature Learns

Once the resonance condition is established, the percipient can evaluate the results (via the feedback mechanism shown in Figure 5) and can then change its mind state with regard to the object being perceived. The perceived information can then be processed by brain functions so that cognition occurs with respect to the perceived information and thus allowing meaning to be assigned to it. Cognition and meaning require finding a relationship between the perceived information and the information residing in the percipient's memory and this information will be interpreted based on the percipient's beliefs and prior experience stored in its memory. The percipient can then form intent with respect to the object. In such cases, the output labeled "action" changes from "attention" (passive state) to "intention" (pro-active state).

In self-aware animals (e.g. those with a brain) cognition, meaning, and intent with respect to an external object can often be described in simple terms, for example enemy; fight or flight; food, eat; greet, etc. The nonlocal component of information, although present and creating effect, is operating below the level of conscious perception in humans and results in "instinctual" subconscious behaviors in animals. Classical modeling of this autonomous activity describes it in terms of classical information and energy flow in the central nervous system and the brain. However, as QH suggests, non-locality is operating at all levels of activity, certainly there are resonances involving this non-local information operating throughout all the cells of an organism in parallel with classical space-time functions as described earlier in this paper.

The results for intentional effects of non-locality should be no more difficult to accept than the results for perception -- normal perception using the five senses. The resonant condition (PCAR) implies a symmetry whereby information flows in both directions between the object and the percipient such that each is both the target object and percipient to the other. Only the complexity of the more ordered normal sensory mechanisms suggests a non-symmetrical relationship. In general, humans seem to have great difficulty accepting those thoughts, specifically intentionality, that can cause action at a distance (remember Einstein's "spooky action at a distance"). Yet, it has been observed for centuries and only in recent decades has it been subjected to scientific scrutiny.

The case of resonance conditions via PCAR to create remote effects by transfer of non-local information between equally complex percipients like humans is not difficult to understand. Indeed, hundreds of successful experiments have established the case. In all these cases no energy transfer is required, only nonlocal information, as each percipient/target object has access to its own energy source. The case for intentionality creating remote effects in inanimate objects is more puzzling. Teleportation of quantum states has been successfully accomplished for particles as described by Darling (2005) and now has practical applications in quantum computing. Numerous studies by Radin (1997), and earlier by Dunne and Jahn (1988) show that macro-scale objects can also be changed or moved, but the energy transfer mechanism by which the classical states of a remote object are affected remains elusive but perhaps is related to utilizing energy directly from the zero-point field.

10. Summary and Implications

Someone recently requested the authors describe quantum holography and its implications in two pages, a very difficult task indeed. It has taken us considerably more than that to get here. Nature is extremely complex and does not give up her secrets willingly. Humankind's efforts at understanding her rests on the shoulders of countless dedicated men and women who have come before and are yet to come. Clearly, we have a long way to go before we understand it all. Perhaps what is truly most amazing about nature is that it appears to be knowable at all. Our investigations into the nature of consciousness lead us to believe that the best way to survive and sustain humankind as a civilization and to thrive as well is dependent upon the emergence of a new worldview, one that understands our proper place in the larger scheme of nature. This includes a worldview that properly addresses, in verifiable scientific terms, our collective relationship to each other, to the biosphere, to the environment, and to the entire cosmos. Towards that end, the evidence that we have presented suggests that we live in a universe that operates according to the following principles. It is:

Self-organizing - All non-living and living matter seems to be the result of the emergent complexity adapting and evolving in response to changes in the environment.

Intelligent - The universe utilizes information, processes it and assigns meaning to it. It seems to evaluate new experiences against stored information and "chooses" actions based on that evaluation based on feedback mechanisms.

Creative - All matter in the universe appears to be interconnected and communicates with itself to continually form more complex systems. These systems seem to regulate and organize themselves in ways that are flexible, adaptable and exhibit some form of purposeful behavior.

Trial and error - The habits of nature, its laws, and its operating principles, seem to adapt and evolve by trial and error. The more successful an adaptation is the more it is reinforced. The less successful it is, the more likely it would be to atrophy and eventually die out or fade away into disuse.

Interactive - All matter continually interacts with all other matter. There is no such thing as independent action. Everything is defined in relationship to everything else.

Learning - Experience is retained in nature's memory, the Quantum Hologram. Once information is created it is always available and never forgotten.

Participatory - The role of intention in conscious matter has a demonstrable effect.

Evolving - Since its beginnings, nature has been developing into ever-increasing levels of complexity in response to environmental changes or pressures resulting from natural processes.

Non-locally connected - All things in nature are interconnected in a very fundamental way beyond time and space. The exchange of information between any two objects occurs instantaneously no matter their space-time separation and these interconnections cannot be shielded or attenuated.

Based on Quantum Principles - From the micro scale of subatomic particles to the largest objects in the cosmos and everything in between, all matter displays the quantum characteristics of entanglement, coherence, correlation, and resonance.

This universe seems, in some sense, to be a living, evolving, adapting universe that utilizes information to organize itself and to create ever-increasing levels of complexity. We are a part of it and cannot be separated from it and are interconnected with it all. Furthermore, it appears to be a self-referencing system (see Figure 6). As nature learns, habits form, and those that lead to useful outcomes solidify and effectively become "hard-coded". Even then these "habits of nature" (including us) adapt and evolve by trial and error as change occurs. It appears that nature has bootstrapped itself not only into existence but has evolved itself into the current state of complexity that we now observe all around us. Most astounding of all is that humankind has evolved to the point that we can ask questions and have begun to gain an understanding fundamental to nature's very existence. Perhaps, then, we and all sentient beings really are one of nature's way of knowing about and experiencing itself. Not only that, in some sense, we seem to be able to influence its very evolution.

Our hypothesis of interconnectedness and oneness suggested by quantum attributes and processes have been espoused by ancient sages, avatars, mystics, spiritual leaders and shamans throughout all times and by all cultures. Just as modern man has evolved from our ape-like ancestors, so too must we evolve to the next level of sophistication and refinement, and by inference our civilization as well. Change, adaptation to that change and evolution seem to be nature's intrinsic mandate built in to the very fabric of reality. All creation must either perish or constantly evolve. Nature has demonstrated this principle throughout its entire history and has seen to it that there are no alternatives. The arrow of time flows in one direction only.

Nature - A Self Referencing System

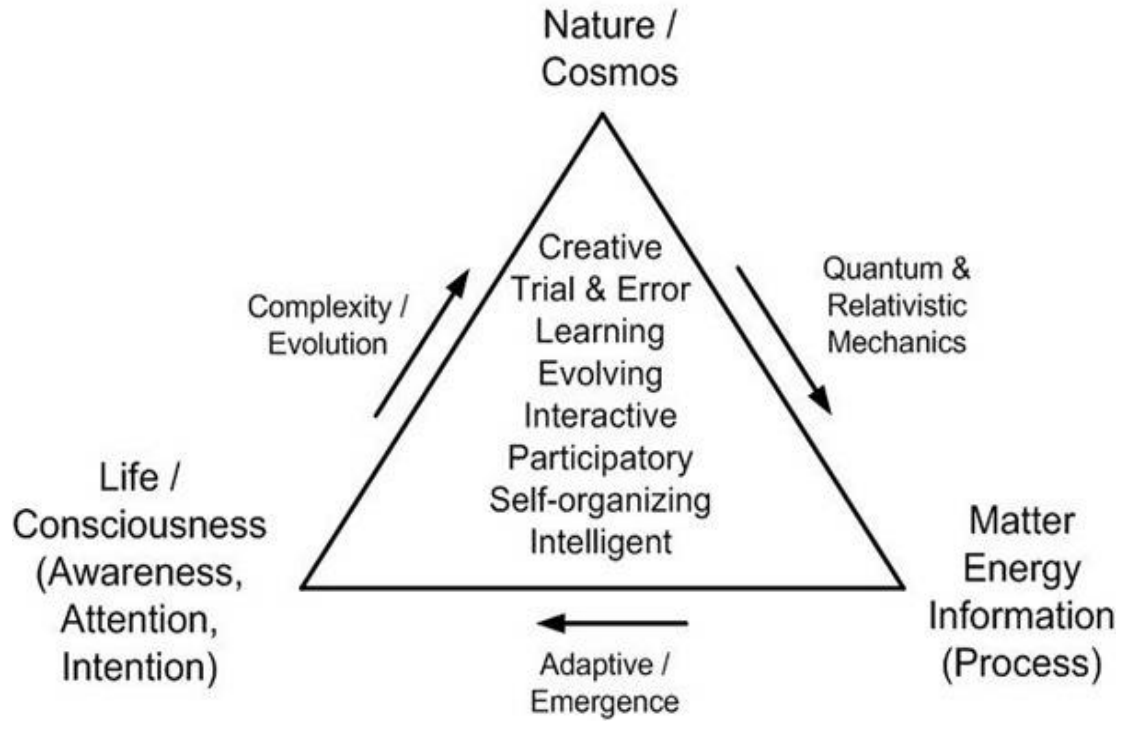


Figure 6 - Nature's Bootstrap Process

We have presented our hypothesis as a map of reality that appears to match observations and experimental evidence fairly well. It seems to account for many phenomena in nature that here-to-for had no explanations to account for them. However, as we have said throughout this manuscript, the map is not the territory. Instead, it is nothing more than a model of that territory that makes predictions about how the territory will behave under certain circumstances. We believe that the cornerstones of our theory are built upon known and verified properties and processes of nature and perhaps some yet to be discovered. However, like all theories in science, all that we have proposed is testable. Those parts of it that are not validated will have to be modified, revised or discarded and replaced. Such is the nature of scientific inquiry. At the very least we hope that we will encourage discussion and research to further enhance humankind's understanding of nature.

It has been said that democracy requires an informed electorate to thrive and prosper. It would seem that that is excellent advice in most areas of human endeavor. Sound bites, personal biases, self serving interests have no place if we are to adapt and evolve in our understanding. We must remain open, be willing and desirous to be informed and, most of all, willingly engage in learning and discovering new knowledge about this world in which we live and our true place within it. The issues we face are too important to ignore either by willful neglect or lack of understanding. Our very survival and the survival of all life on earth depend upon it.

We leave you this ancient Sanskrit proverb:

God sleeps in the minerals,
Awakens in plants,
Walks in animals and,
Thinks in man.

References

Benford, M. (2000). Empirical Evidence Supporting Macro-Scale Quantum Holograph in Non-Local Effects, Journal of Theoretics, retrieved from archives at www.journaloftheoretics.com/Articles/2-5/Benford.htm.

Church, D. (2007). The Genie in your Genes, Elite Books, Santa Rosa, CA.

Darling, D. (2005). Teleportation - The Impossible Leap, John Wiley & Sons. Hoboken, NJ.

Davies, P. (2008). The Goldilocks Enigma, Houghton Mifflin, Boston MA.

Day, L., De La Warr, G. (1966). Matter in the Making. Vincent Stuart LTD, London, UK.

Dossey, L. (1993). Healing Words- The Power of Prayer and the Practice of Medicine, Harper, San Francisco, CA.

Dunne, B., Jahn, R.G. (1988). Operator Related Anomalies in a Random Mechanical Cascade, JSE 2:pp 155-180.

Haisch, B. (2006). The God Theory, Red Wheel/Weiser LLC, San Francisco, CA.

Haisch, B., Reuda, A., Putoff, H. (1997). Physics of the Zero Point Field: Implications for Inertia, Gravity and Mass, Speculations in Science and Technology, Vol. 20, pp. 99-114.

Hameroff, S. (1994). Quantum Coherence in Microtubules: A Neural Basis for Emergent Consciousness?, *Journal of Consciousness Studies*, Vol. 1, pp 91-118.

Hameroff, S. (1998). Quantum Computation in Brain Microtubules? The Penrose-Hameroff "Orch Or" Model of Consciousness. *Philosophical Transactions: Mathematical, Physical and Engineering Sciences*, Royal Society of London, Aug 25, 1998; 356(1743): 1869-1896.

Hameroff, S., Woolf, N. (2001), A Quantum Approach to Visual Consciousness, *Trends in Cognitive Sciences*, Vol. 5, Issue 11, pp. 472-478.

Harman W., Clark, J. (1994). *New Metaphysical Foundations of Modern Science*, Institute of Noetic Sciences, Sausalito, CA.

Ho, M. (1997). Quantum Coherence and Conscious Experience, *Institute of Science in Society*, *Kybernetes* 26, pp. 265-276.

Laszlo, E. (2004). *Science and the Akashic Field*, Inner Traditions, Rochester, VT.

Lipton, B. (2005). *The Biology of Belief*, Elite Books, Santa Rosa, CA, p 64.

Marcer, P. J. (1998). The Jigsaw, the Elephant and the Lighthouse, *Proceedings of ANPA* 20.

Marcer P., Schempp W. (1997). The Model of the Prokaryote Cell as an Anticipatory System Working by Quantum Holography, In: Dubois D. *Proceedings of the First International Conference on Computing Anticipatory Systems*, Liege, Belgium, August 11-15:307-313.

Marcer, P., Schempp, W. (1997). Model of the Neuron Working by Quantum Holography, *Informatica* Vol. 21, pp. 519-534.

Marcer, P.J. (1998). A Quantum Mechanical Model of the Evolution of Consciousness.

Mitchell, E. and Williams, D. (2008), *The Way of the Explorer*, New Page Books, Franklin Lakes, NJ.

Mitchell, E. (1995). A Dyadic Model of Consciousness, *World Futures*, Vol. 46. pp. 69-78.

Mitchell, E. (2001). *Natures Mind: The Quantum Hologram*, Institute of Noetic Sciences, Petaluma, CA.

Mitchell, E., (2003). *Quantum Holography: A Basis for the Interface Between Mind and Matter*, Bioelectromagnetic Medicine, Marcel Dekker, New York.

Penrose, R. (1994). *Shadows of Mind*, Oxford University Press, Oxford.

Pribram, K. (1999). *Brain and the Composition of Conscious Experience*, *Journal of Consciousness Studies*, No. 5, pp. 19-42.

Pribram, K. (1999) *Quantum Holography: Is it relevant to Brain Function?*, *Information Sciences* Vol. 115, pp. 97-102.

Puthoff, H.E. (1996). *CIA Initiated Remote Viewing Program at Stanford Research Institute*, *JSE* 10:63-76.

Puthoff, H.E. and Targ, R. (1976). *A Perceptual Channel for Information Transfer over Kilometer Distances: Historical Perspective and Recent Research*, *proceedings of the IEEE* 64:329-354.

Radin, D. (1997). *The Conscious Universe*, Harper, San Francisco, CA.

Radin, D. (2006). *Entangled Minds*, Paraview, NY.

Schempp, W. (1998). *Magnetic Resonance Imaging: Mathematical Foundations and Applications*, Wiley-Liss, New York.

Schempp W. (1999). *Sub-Reimannian Geometry and Clinical Magnetic Resonance Tomography*, *Math Meth Appl Sci* 22:867-922.

Schempp, W. and Mueller, K. (2007), *Bandpass filter processing strategies in non-invasive symplectic spinor response imaging*, *Inf. Computation. Sci.* 4, pp. 211-232.

Schempp, W. (2008), *The Fourier holographic encoding strategy of symplectic spinor visualization*, *New Directions in Holography*, pp. 479-522.

Schmeidler, G.R., Craig, J.G. (1972). *Moods and ESP Scores in Group testing*, *Journal of ASPR*, Vol. 66, no. 3, pp 280-287.

Schlitz, M., Wiserman, R. (1997). *Experimenter Effects and the Remote Detection of Staring*, *Journal of Parapsychology*, Vol. 61, September.

Sheldrake, R. (1981). *A New Science of Life: The Hypothesis of Formative Causation*, Tarcher, Los Angeles.

Sheldrake, R. (1997). *Mind, Memory, and Archetype: Morphic Resonance and the Collective Unconscious*, Psychological Perspectives.

Sheldrake, R. (1999). *Dogs That know When Their Owners Are Coming Home*, Random House, NY, NY.

Stevenson, I. (2001). *Children Who Remember Previous Lives: A Question of Reincarnation*, revised ed., Jefferson, NC, McFarland & Company.

Utts, J.M. (1991). Replication and Meta-Analysis in Parapsychology, *Statistical Science*, 6: 363-382.

Bio: Dr. Edgar Mitchell was one of the 4 co-founders of the **Dr. Edgar Mitchell FREE Foundation** and was an active member of the FREE Board of Directors. Our beloved Edgar passed away on February 4, 2016. Dr. Mitchell was a member of the Apollo 14 mission which was NASA's third manned lunar landing and he was the 6th man to walk on the moon. Dr. Mitchell has a Doctor of Science in Aeronautics and Astronautics from MIT and has received many awards and honors including the Presidential Medal of Freedom, the USN Distinguished Medal and three NASA Group Achievement Awards. In addition, he was inducted to the Space Hall of Fame in 1979, the Astronaut Hall of Fame in 1998, was nominated for the Nobel Peace Prize in 2005 and was inducted into the Leonardo da Vinci Society for the Study of Thinking in June, 2011. After retiring from the Navy in 1972, Dr. Mitchell founded the **Institute of Noetic Sciences**. He has authored *Psychic Exploration: A Challenge for Science, Understanding the Nature and Power of Consciousness (1974)* and *The Way of the Explorer (1996)* as well as dozens of articles in both professional and popular periodicals. He devoted the last 40 years of his life to studying science and physics of human consciousness and the Contact Modalities including the topics of CAP-UFOs, Near Death Experiences, the Afterlife, and paranormal phenomena in the search for a common ground between science and spirituality.